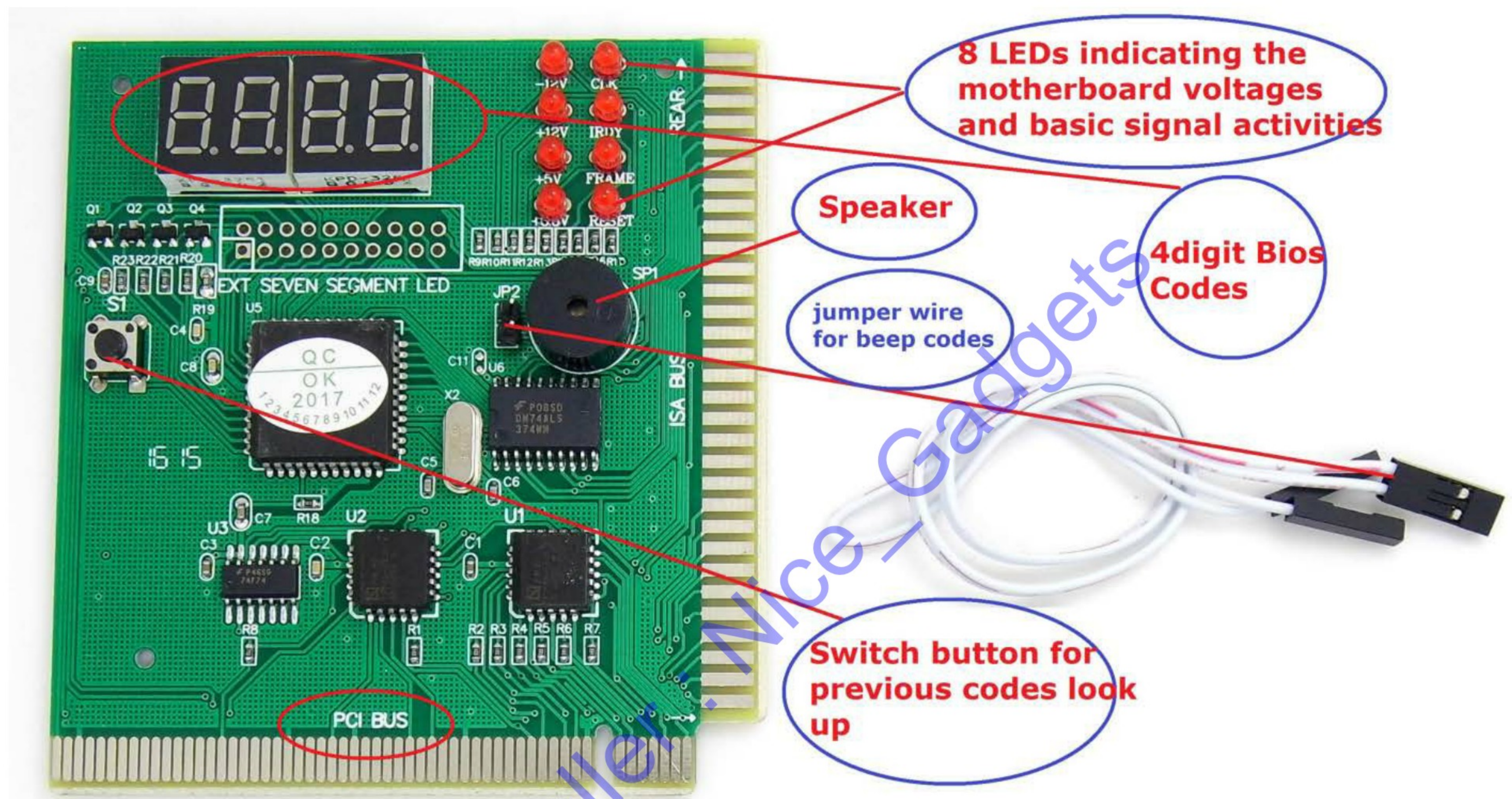


User manual

for the desktop PC standard PCI diagnostic card



This starter kit comes with the ads stated Standard PCI diagnostic card to work on the desktop PC standard PCI slots as well as the server computer PCI-X slots.

This is the starter kit standard PCI diagnostic card; this diagnostic card will not work on any other connectors including the PCIe express slots.

If need the diagnostic kit with the PCIe connections, please purchase the Prokit edition.

Features:

1. The 4digit display shows the Bios codes, the LEFT 2digit shows the diagnostic Bios code of the last component being tested, the **RIGHT 2digit** Bios codes shows the diagnostic Error Codes if there is faulty component on the computers.

Please take note that when installing this diagnostic card to the working fine computers, the codes are all the Process Codes showing the diagnostic status. We should ignore the Process codes.

When installing this diagnostic card to the **faulty computers** such as no POST no boot no display ... etc. computers, the diagnostic codes will be the **Error Codes**.

We need to look up the manual codes for the descriptions.

2. Besides the 4digit digital codes, this new diagnostic card comes with the LEDs indicators that help to show the motherboard basic voltages and the activities.

The CLK LED is for showing the motherboard clock signal, normally, when we have a working PC, this CLK LED should remain ON for a little while after we powering on the

computer.

The RST LED is for showing the motherboard Reset activities. Once we power on the computer, the motherboard will quickly reset itself for once or twice, so we may see this LED quickly flash once or twice quickly when we press the computer power button.

3. Besides the digital codes and the LED codes, there is also a built-in onboard speaker on the diagnostic card for the audio beep codes. If the computer motherboard does not come with the onboard speaker for BIOS beep codes, we may connect the computer motherboard speaker pins to the diagnostic card by using the included small audio cable. This allows us to get the BIOS beep codes by using the diagnostic card speaker instead.
4. The small switch button is for us to look back to more previous codes for more reference. Normally, we need not to press the button, after installing the diagnostic card to the motherboard and powering on the computer, we should wait a minute for the diagnostic card to scan the motherboard and the codes to change till steady on the diagnostic card, next, please use the RIGHT 2-digit BIOS codes and look up the manual codes list for the error codes interpretations.

Please kindly see the BIOS POST codes list descriptions in the other laptop diagnostic card manual. Both desktop and laptop diagnostic cards in this starter kit use the same BIOS POST codes description lists.

In summary, this new PCI diagnostic card is a nice starter diagnostic card to trouble PC and Server computers using the ads stated Standard PCI and PCI-X connectors.

This new diagnostic card combines all 3 types of the diagnostic codes: the Digital, the LED and the Audio beep codes in the computer hardware diagnosis.

Hope this guide helps.

If need more assistance, please kindly contact me.

I would like to help you immediately.

Thank you.

William